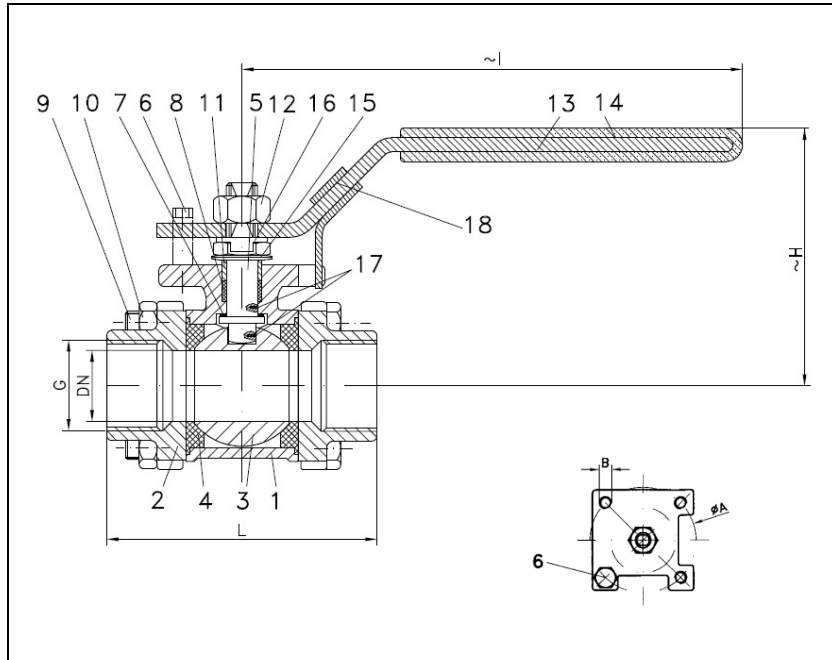


BALL VALVES RK-PROBALL

KH 3T M (NC), 1/4" - 4", PN63/100

safety spring locking device



Ball valves RK-Proball KH 3T all sizes are also available with pneumatical, electrical or hydraulic actuators.

No.	Part	Material	Material
1	body	1.0619	1.4408
2	cap	1.0619	1.4408
3	ball		1.4408
4	seat		KFG
5	stem		1.4401
6	stop pin		1.4301
7	washer		KFG
8	stem packing		KF
9	hex. nut		A2-70
10	hex. screw		A2-70
11	thrust washer		1.4301
12	hex. nut		A2-70
13	lever		1.4301
14	insulation cover		Vinyl
15	plate spring		1.4310
16	locking plate		1.4301
17	antistatic element		1.4401
18	spring locking device		1.4301

Ball valve with threaded ends acc. to EN 10226-1 / EN ISO 228-1

full bore

face to face acc. to DIN 3202-M3

Specification:

Three-piece ball valve, threaded ends acc. to EN 10226-1 / EN ISO 228-1, face to face dimensions acc. to DIN 3202-M3, full bore, blow-out-proof stem, body material stainless steel (1.4408) or steel (1.0619), antistatic device, free of non ferrous metals, seat KFG, stem packing KF, disc spring loaded adjustable, top flange DIN EN ISO 5211, approved by PED, certified acc. to GERMAN clean air act VDI 2440, lever with safety spring locking device.

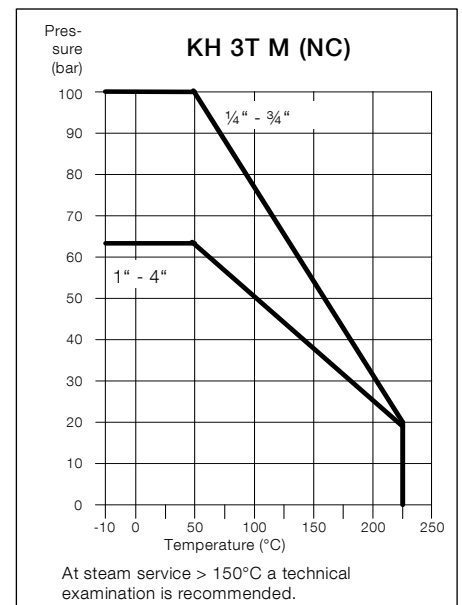
Marking:

RK-Proball

Types:

KH 3T M (NC)-1.0619

KH 3T M (NC)-1.4408



Ordering example:

KH 3T M (NC), 2", PN 63, 1.4408, safety spring locking device

Dimensions

DN mm	G inch	PN	dimensions (mm)			top flange ISO 5211			Kv-value m³/h	torque Nm	weight kg
			H	I	L	Ø A	B				
10.6	1/4	100	63	118	50	F03	36	M5	6	3	0.5
12.7	3/8	100	63	118	60	F03	36	M5	7	3	0.5
15	1/2	100	67	135	75	F04	42	M5	10	5	0.7
20	3/4	100	73	135	80	F04	42	M5	25	10	0.9
25	1	63	80	168	90	F05	50	M6	35	11	1.3
32	1 1/4	63	87	168	110	F05	50	M6	46	20	2.2
38	1 1/2	63	103	205	120	F05	50	M6	80	26	2.8
49	2	63	112	218	140	F07	70	M8	110	30	4.4
65	2 1/2	63	156	280	185	F07	70	M8	310	70	9.8
80	3	63	163	376	205	F10	102	M10	360	90	14.8
100	4	63	194	376	240	F10	102	M10	820	120	25.4

06/2016

Subject to modification.